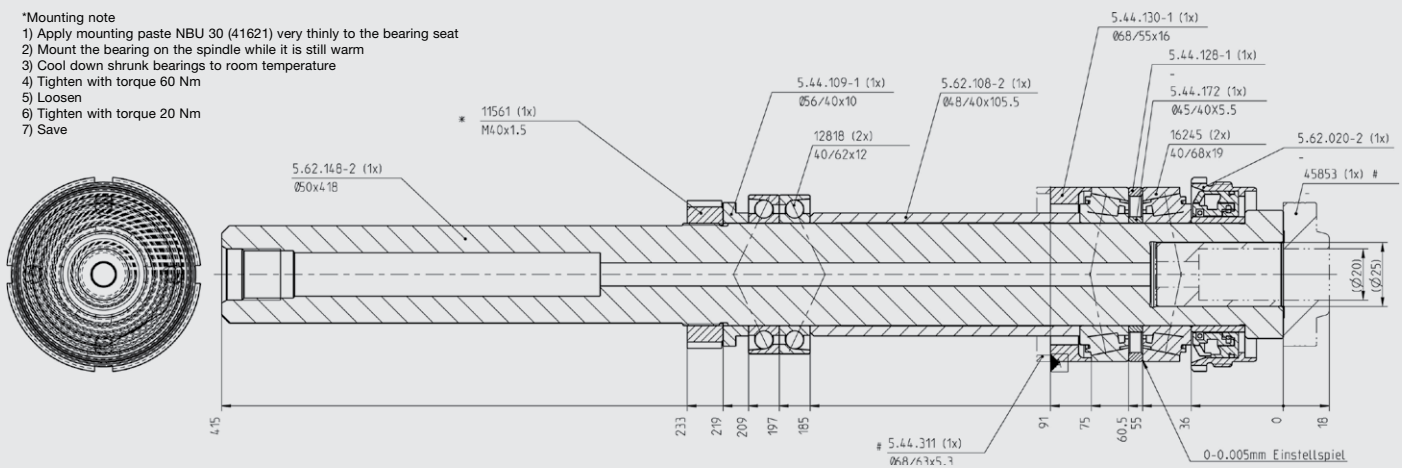


Longitudinal cut of a large TENDOturn spindle

***Mounting note**

- 1) Apply mounting paste NBU 30 (41621) very thinly to the bearing seat
- 2) Mount the bearing on the spindle while it is still warm
- 3) Cool down shrunk bearings to room temperature
- 4) Tighten with torque 60 Nm
- 5) Loosen
- 6) Tighten with torque 20 Nm
- 7) Save

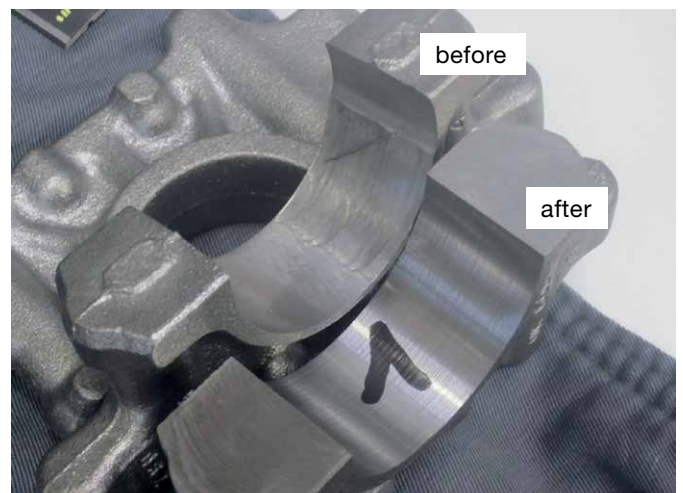


TENDOturn Spindle Retrofitting

Advantages

- ▶ Increased torque for machining.
- ▶ The manufacturer's specification for the torque for the large TENDOturn DSE Ø 25/20 is 220 Nm.
- ▶ We were able to measure on our machines on a CNC 36/100 tool spindle unit, as well as on a CNC 50/100 turning unit, a torque value of 300 Nm.
- ▶ For the CNC 36/100 tool spindle units there are two different tool holders:
 5.62.148-1 drill Ø 20 mm, tool Ø 12 mm
 5.62.148-2 drill Ø 25 mm, tool Ø 20 mm

Processing differences



Overview Pfiffner Supply of Services

Service Products

- ▶ Replacement of control panel
- ▶ Replacement Siemens 805
- ▶ ReVest®
- ▶ Repair Express
- ▶ Sawing unit, reinforced expansion stage
- ▶ CNC stand alone machining unit
- ▶ Test bench
- ▶ TENDOfurn spindle uprating
- ▶ Inverting unit monitored
- ▶ High-pressure collet flushing
- ▶ Rent instead of buy

Control / Teleservice / Security

- ▶ Pfiffner Remote Service (data glasses)
- ▶ Fingerprint
- ▶ Inspection, prevention pays off
- ▶ Maintenance agreement, prevention pays off
- ▶ Customer training
- ▶ Call Teleservice
- ▶ Safety inspection
- ▶ Teleservice box
- ▶ Energy efficiency subsidies

